



LTC
COMMERCIAL
LINEAR
LUMINAIRE

 **SUPRA**

www.supralighting.com

LTC

DATASHEET
COMMERCIAL LINEAR LUMINAIRE

The LTC, compatible for both new construction and retrofit, blends seamlessly into your space to provide ambient lighting for surface-mount applications in both industrial and commercial settings.

Applications

- Showrooms
- Hallways
- Gymnasiums
- Convenient Stores

Wireless Controls

Available wireless controls option includes the integrated SupraLink sensor programmable remotely through Bluetooth using the smartphone app.

Certifications

- NOM
- C-UL-US Certified



Warranty

5-year limited warranty, provided the specifications in the product installation manual have been followed. All other express and implied warranties are disclaimed.

Note: Actual performance may vary with end-user environment and application.



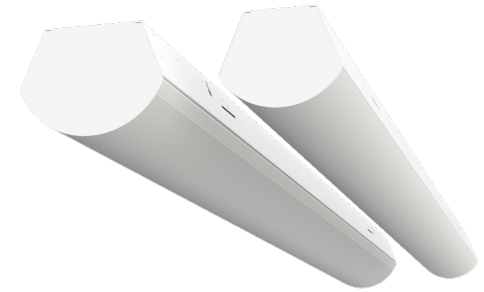


LTC

DATASHEET
COMMERCIAL LINEAR LUMINAIRE

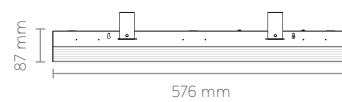
Installation

Suitable for cable suspension or mounting flush to the smooth ceiling surface.

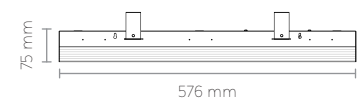


Models

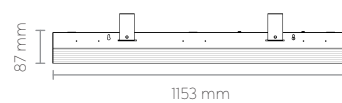
LTC 11 M2



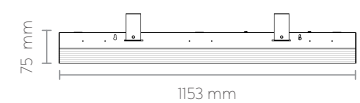
LTC 11 M2



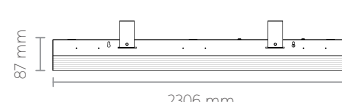
LTC 11 M4



LTC 11 M4



LTC 11 M8



LTC 11 M8



Electrical Specifications

- Electrical Driver:
- Voltage: 120 - 277 V~
- Dimming Method: 0-10 V (DC)
- Dimming Range: 10-100%
- Power Factor: > 0.90
- Average Life: 50,000 hours
- Operating Temperature -30°C to 55°C
- Color Temperature: 5000 - 4000 K



Lumens

- L70 > 54,000 hrs.



LTC

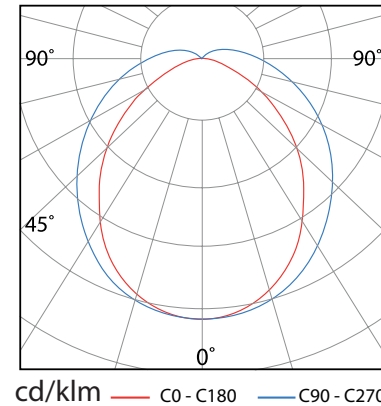
DATASHEET
COMMERCIAL LINEAR LUMINAIRE

Luminous Flux vs Ambient Temperature

The final luminous flux depends on the ambient temperature of the luminaire's location. Multiply the correction factor by the luminous flux of the selected model to determine the final luminous flux.

TEMPERATURE	CORRECTION FACTOR
25 °C	1
30 °C	0.98
35 °C	0.97
40 °C	0.97
45 °C	0.96
50 °C	0.95
55 °C	0.95
60 °C	0.94

Light Distribution



Performance Information

FAMILY	DIFFUSER	MODEL	LUMEN CODE	CRI	CCT	LUMINOUS FLUX	VOLTAGE	WATTAGE	EFFICACY
LTC	11	M2	L03	≥84	5000 K	3,142 lm	120V	23.9W	131 lm/W
LTC	11	M2	L02	≥84	5000 K	2,437 lm	120V	18.6W	131 lm/W
LTC	11	M4	L06	≥84	5000 K	6,056 lm	120V	47.0W	129 lm/W
LTC	11	M4	L05	≥84	5000 K	5,000 lm	120V	36.2W	138 lm/W
LTC	11	M4	L04	≥84	5000 K	4,213 lm	120V	30.3W	139 lm/W
LTC	11	M4	L02	≥84	5000 K	2,439 lm	120V	18.0W	136 lm/W
LTC	11	M8	L12	≥84	5000 K	12,111 lm	120V	94.0W	129 lm/W
LTC	11	M8	L10	≥84	5000 K	10,001 lm	120V	72.4W	138 lm/W
LTC	11	M8	L08	≥84	5000 K	8,425 lm	120V	60.6W	139 lm/W
LTC	11	M8	L06	≥84	5000 K	6,124 lm	120V	42.9W	143 lm/W
LTC	11	M8	L04	≥84	5000 K	4,256 lm	120V	29.9W	142 lm/W
LTC	09	M2	L03	≥84	5000 K	3,048 lm	120V	23.9W	128 lm/W
LTC	09	M2	L02	≥84	5000 K	2,364 lm	120V	18.6W	127 lm/W
LTC	09	M4	L06	≥84	5000 K	5,874 lm	120V	47.0W	125 lm/W
LTC	09	M4	L05	≥84	5000 K	4,850 lm	120V	36.2W	134 lm/W
LTC	09	M4	L04	≥84	5000 K	4,086 lm	120V	30.3W	135 lm/W
LTC	09	M4	L02	≥84	5000 K	2,366 lm	120V	18.0W	131 lm/W
LTC	09	M8	L12	≥84	5000 K	11,748 lm	120V	94.0W	125 lm/W
LTC	09	M8	L10	≥84	5000 K	9,701 lm	120V	72.4W	134 lm/W
LTC	09	M8	L08	≥84	5000 K	8,172 lm	120V	60.6W	135 lm/W
LTC	09	M8	L06	≥84	5000 K	5,941 lm	120V	42.9W	138 lm/W
LTC	09	M8	L04	≥84	5000 K	4,129 lm	120V	29.9W	138 lm/W

Ordering Information

Example order:

① ② ③ ④ ⑤ ⑥ ⑦ ⑧
LTC-11-M8-L10-850-MV-SM-WMS

Codes:

① Family

LTC

② Diffuser

09: 9 cm wide

11: 11 cm wide

③ Model

M2: 2 ft

M4: 4 ft

M8: 8 ft

④ Lumen Code

L12: $\geq 12,000$ lm

L10: $\geq 10,000$ lm

L08: $\geq 8,000$ lm

L06: $\geq 6,000$ lm

L05: $\geq 5,000$ lm

L04: $\geq 4,000$ lm

L03: $\geq 3,000$ lm

L02: $\geq 2,000$ lm

⑤ Color Code

850: CRI: 80 and CCT: 5000 K

840: CRI: 80 and CCT: 4000 K

⑥ Voltage

MV: 120 - 277 V~

⑦ Installation

SM: Surface Mount

CT: Cable Tie

⑧ Accessories

ED: Emergency Driver

SL: SupraLink

IS: Intelligent Sensor

WMS: Wide Motion Sensor

NMS: Narrow Motion Sensor

Contact

Corporate Headquarters:

500 W 2nd St

Floor 19

Austin, TX 78701

Phone: (512) 870-9827

Manufacturing Facility:

Av Abraham Lincoln

66023 García, Nuevo León

Mexico



Supra Lighting Incorporated

info@supralighting.com

service@supralighting.com

www.supralighting.com